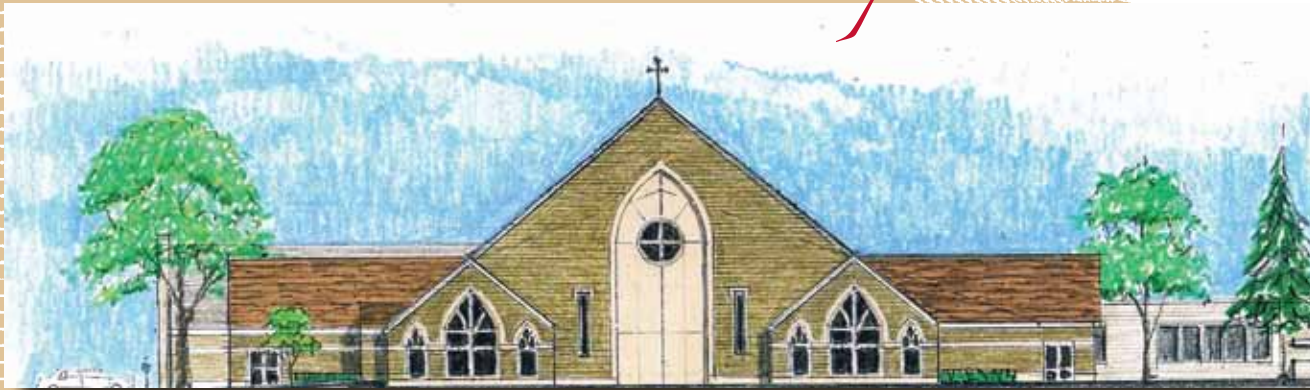


CHANGING THE FACE OF *Saint Raphael Parish*



FROM GENERATION TO GENERATION

Phase II

Heavenly Father,
You have called us to be a holy people,
to a deep and lasting relationship with You.
For over six decades, we, Your people,
have gathered to worship.

Lord, Jesus,
You have journeyed with us
through all the different experiences of our lives.
From the beginning of life to the end of life,
You have been ever faithful, ever true.
You have loved us with an everlasting love.

Lord, Jesus,
as we move forward under Your guidance and direction,
help us to continue to build a community of faith
along with a new church for worship.

You have blessed us over the years
and have drawn us together to pray.
We have found comfort and strength
through the celebration of the sacraments.

As we prepare for our new worship space,
we call upon You with confidence and trust.
From living stones, You have molded a faith community
who praise and love You and have grown in friendship with You.

May the building of our church remind us of the spiritual gifts
You desire to increase in us,
that we may become Your holy dwelling place,
united in Your Holy Spirit as vessels of Your love.

We entrust to Your providential care all our needs,
as well as those of our benefactors
and all those involved in this project.

May we give You all honor and glory Through Jesus Christ, Our Lord,
Who lives with You and the Holy Spirit One God for ever and ever.

Amen



My dear friends in Christ,

My eleven years at Saint Raphael have been an incredible journey for me, both spiritually and personally. I truly experience a deep faith and the love of God in our faith community. You have taught me so much about God and the Church and you have loved me as a brother and a friend. I am eternally grateful to you and keep you in my daily prayers.

We have grown beautifully as a faith community over the years, most especially, in our faith lives where we continue the work of the Lord in our homes, in our neighborhoods and in our workplaces. We are a special testimony of a living faith. We have also expanded in the registered number of parishioners, those attending our Parish Day School, Parish School of Religion, Pre- School, and in various aspects of parish life. We impact the lives and hearts of so many through our ministries in carrying out the mission of Jesus.

Our physical campus continues to grow with us - the new Parish Activity Center, Parish Offices, expansion of the parking lot, and new rectory - and we are now ready to move ahead! Our church has always been at the center of our lives and at the center of the Master Planning process we began in 2006. Now is the time to embark upon our parish dream—to build a new worship space.

We have a unique opportunity to build on our efforts to become a Stewardship parish through a “combined campaign” with the Diocese that we are calling: *Changing the Face of Saint Raphael Parish from Generation to Generation, Phase II*. This appeal will fund Phase II of our Master Plan and our parish commitment to our Diocesan Campaign, *Rooted in Faith, Forward in Hope*.

The key to the second phase of our Master Plan is addressing our current and future need for more space to accommodate all those who seek to celebrate the Eucharist with us. Our parish family continues to grow, and we need to plan for the future, realizing that fewer priests will necessitate fewer weekend Masses, and result in larger attendance at each one.

Every parish in our Diocese will be participating in *Rooted in Faith, Forward in Hope*, a comprehensive initiative to strengthen our parishes and ensure the future of programs that serve many people in our Diocese. The impact of this campaign will be felt far into the future, and significantly help improve our local and diocesan church by:

- Addressing the needs of the poor
- Providing better education for children
- Evangelizing the Good News of the Gospel more effectively
- Training for future priests and caring for priests entering retirement
- Helping every parish – each is receiving a share of the campaign proceeds raised in their parish.

While this combined campaign will be a major challenge, I believe the Lord is moving us in this direction. For the foreseeable future, making our vision of a new worship space a reality has to include helping address our diocesan needs. I invite all of our parishioners and friends to embrace this combined campaign in its entirety as a tangible sign of our commitment to Stewardship as a way of life. I am confident that with sacrifice from all of our parishioners, together we can reach our goal.

This is another exciting step for us in the history of our parish and our journey of faith. We are a blessing and an icon to the Bay Village Community situated right in the middle of this great city. It has become a Saint Raphael tradition to open our arms to all those who seek a vibrant faith community rooted in Gospel values.

Please know how grateful I am for all of your support and that I appreciate everything you do to help make us a wonderful and vibrant community of faith. Please keep our efforts in your prayers and know that you will remain in mine.

God bless and keep you,

A handwritten signature in black ink, appearing to read "Fr. Gareau". The signature is written in a cursive, flowing style.

Fr. Timothy W. Gareau, Pastor

Phase I of our Master Plan

The Saint Raphael Master Plan was developed in 2006 to provide for the long range needs of our parish family. Phase I provided for a much-needed Parish Activity Center, expansion of the parking lot (including more handicapped spaces), new parish offices and a new rectory.

Finished in 2008, this initial phase was successfully completed on time and on budget. Thanks to the ongoing generosity of our parish family, expected payments from remaining Phase I pledges will be sufficient to complete Phase I funding. Parish life is greatly enhanced by the major accomplishments we have achieved over the past five years.



Official ground breaking in June of 2007.



Demolition makes way for new buildings and parking lot.



A harsh winter of freezing mud.



Our Blessed Lady watched over the progress.



A new entrance leads to the PAC and the church.



Celebration!

Case for Combined Campaign Support

Changing the Face of Saint Raphael Parish from Generation to Generation, Phase II is a landmark initiative to ensure a lasting legacy for the future of both Saint Raphael Parish and the Diocesan Church in northern Ohio. The following is a description of our combined campaign.

Saint Raphael Master Plan Phase II

The second phase of our Master Plan addresses the need to accommodate our growing parish population and to adapt as fewer priests are available for active service.

We have come a long way from our humble beginnings in 1946 as a parish for 165 Catholic families in the village of Bay. In 2011, the number of families has risen to over 3,500, representing more than 11,000 parishioners, our Blue Ribbon school educates over 780 students in the day school and over 770 students participate in the Parish School of Religion.

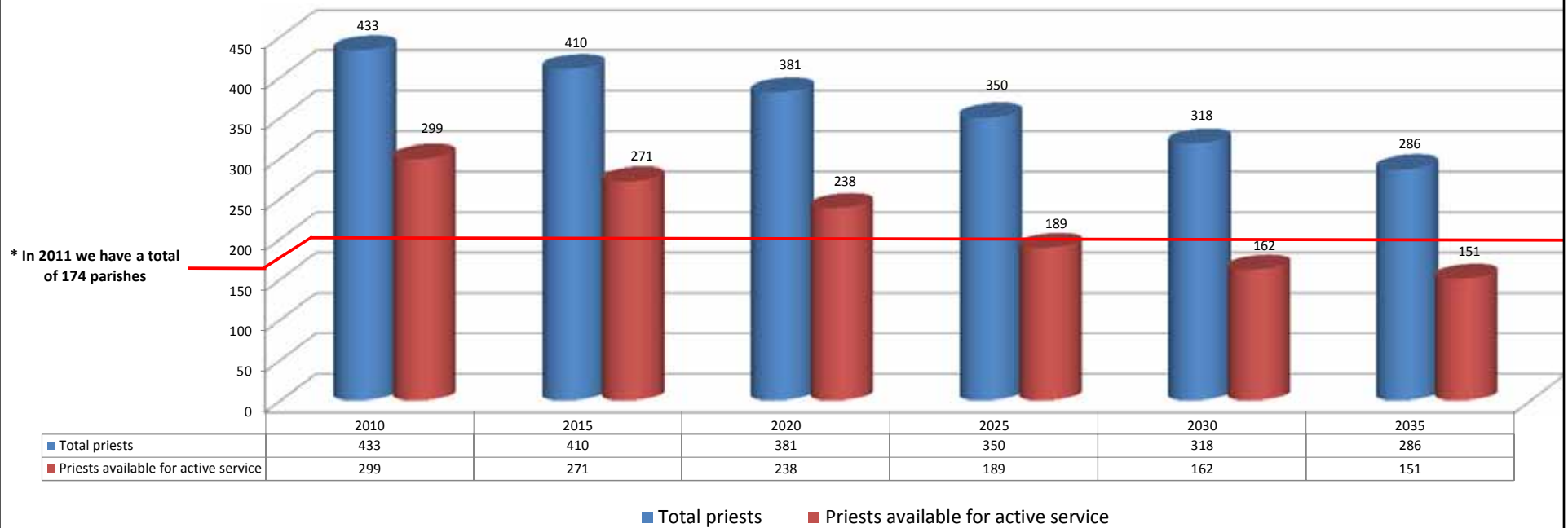
The projected priest shortage in our Diocese (see illustration top of page 5) is an important factor in our parish planning, as we anticipate a future reduction to the number of weekend Masses, which will result in severe space constraints beyond what we currently experience in our 650 seat church.

We need to plan for a more manageable number of weekend Masses, and be able to accommodate larger gatherings on weekends and special occasions. We currently offer an average of nine Masses each weekend (including weddings and funerals) that are covered by two priests. A lack of space necessitates celebrating two Confirmation Masses each year and multiple First Holy Communion Masses each year.

Our vision for Phase II is to:

- Better serve all who seek to join our celebration of the Eucharist through the creation of a new worship space that will accommodate 1,100 participants for each Mass
- Accommodate more families for weekend and special liturgies, including Confirmation, First Holy Communion, Christmas and Easter
- Provide fan shape seating to bring parishioners closer to the sanctuary
- Incorporate holy items from our existing church, including our altar, crucifix, and stained glass windows
- Create an Adoration Chapel for private meditation
- Offer a new Community Room for large meetings and funeral luncheons
- Provide additional handicap accessible parking
- Create a more welcoming green area at the front entrance (at the corner of Dover Center and Osborn Roads)

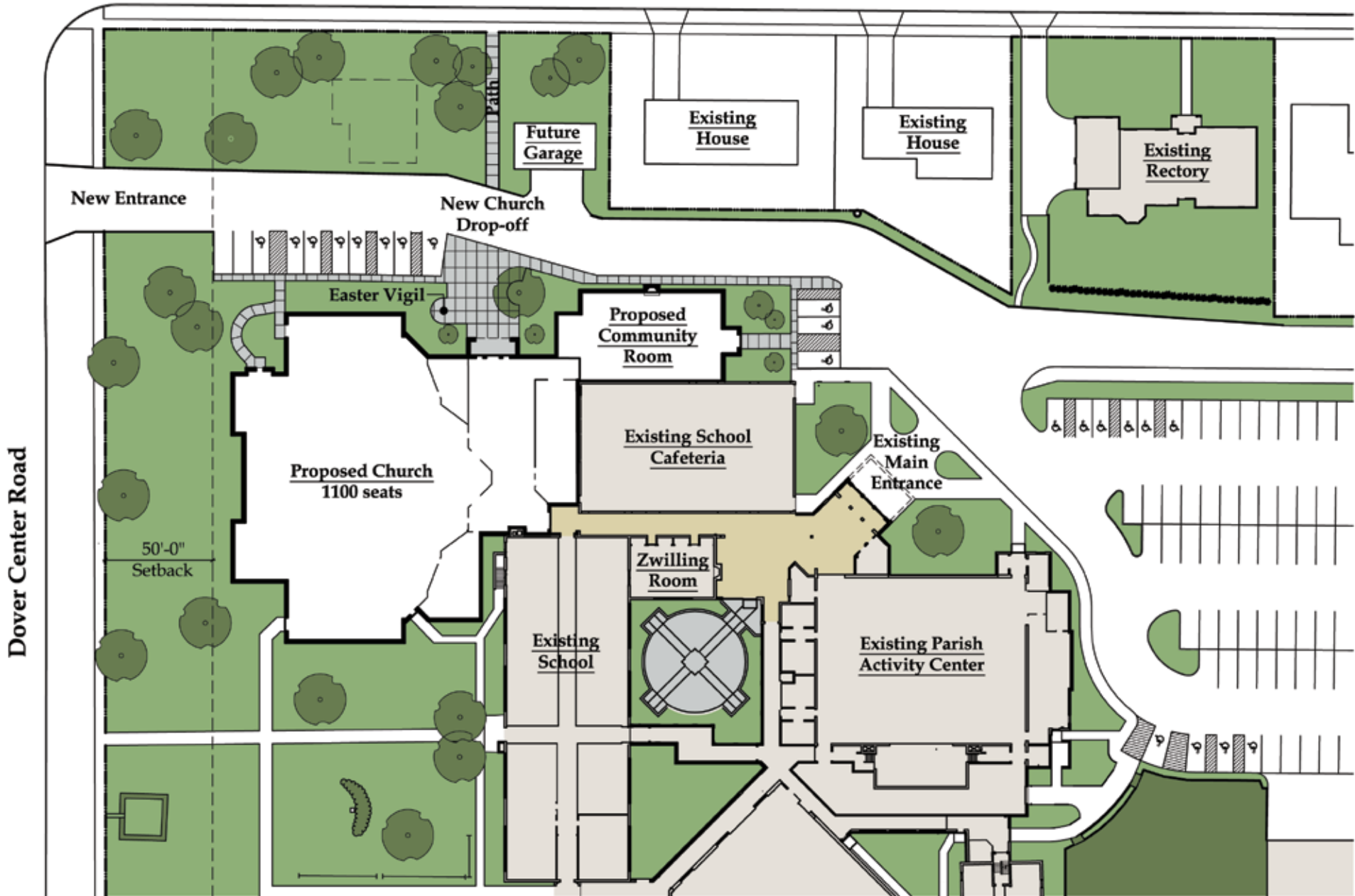
Diocese of Cleveland- Total Number of Priests Projection

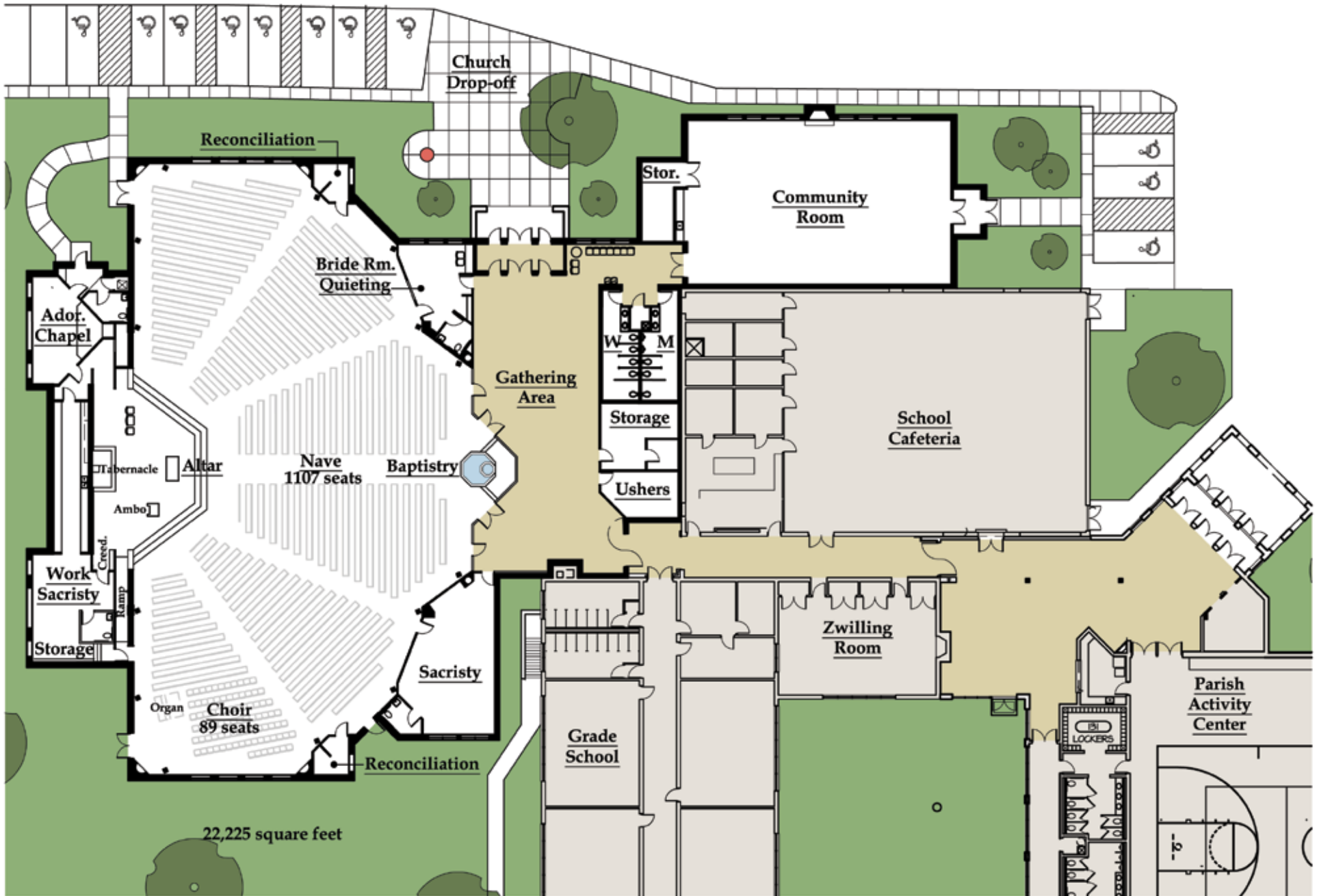


Saint Raphael is joining all of the parishes in our Diocese in an endeavor to realize our vision for a vibrant Catholic Church in Northeast Ohio. Support for this campaign will bestow on our faith community the resources needed to continue building God's kingdom in the Diocese of Cleveland. The goal is to raise \$125 million to carry out the work of the church in five critical areas:

- **Strengthening our Parishes** - returns a share of campaign funds to each parish for individual parish needs
- **Strengthening our Faith** - builds faith through evangelization and connecting people to the Church
- **Catholic Education** - increases the tuition endowment fund and allocates funds to enhance curriculum, facilities and technology
- **Those Who Serve** - supports seminarian education, formation of diaconate candidates and care for our retired priests
- **Charitable Works** - funds expansion programs, acquisition of new sites and renovation of existing facilities to minister to the need of our region through health and human services

For more information about the *Rooted in Faith, Forward in Hope* Campaign, please visit our parish website at saintraphaelparish.com





Combined Campaign Cost Summary

Phase II Project Costs

Construction Costs	\$5,500,000
Architectural & Engineering Costs, Soft Costs, Contingency	<u>771,500</u>
Total Phase II Project Costs	\$6,271,500

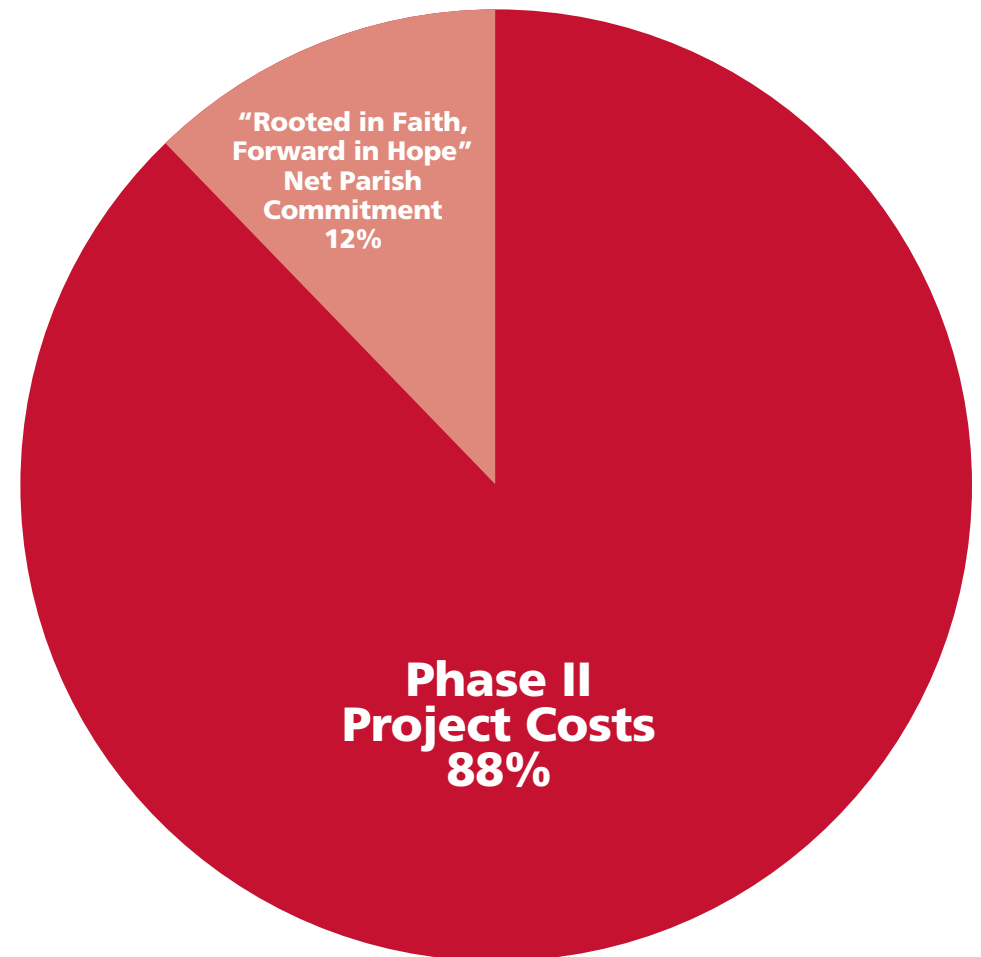
Rooted in Faith, Forward In Hope

Saint Raphael Parish Commitment	\$1,403,500
Less Advance Gifts	<u>(575,000)</u>
Remaining Saint Raphael Parish Commitment	\$ 828,500

Combined Campaign Goal

Total Phase II Project Costs	\$6,271,500	88%
Remaining Saint Raphael Parish Commitment	<u>828,500</u>	<u>12%</u>
Total Need	\$7,100,000	100%

Cost Breakdown



Pledge Request Gift Plans

Changing the Face of Saint Raphael Parish from Generation to Generation, Phase II is the next step in the implementation of the Saint Raphael Master Plan. A heartfelt thanks goes to all who supported Phase I through investments of time, talent and treasure - your commitment is an inspiration to us all!

This combined campaign is an opportunity for all those with a current or past connection to Saint Raphael's to embark on a new chapter in the life of our parish and school with a renewed commitment to good stewardship of all that has been entrusted to us. All parishioners are invited to participate in the appeal by:

- Making a pledge or one-time gift
- Donating time as a campaign volunteer
- Including Saint Raphael Parish in their daily prayers

A commemorative book listing all donors making a gift to *Changing the Face of Saint Raphael Parish from Generation to Generation, Phase II* will serve as a lasting reminder of your commitment to the parish for generations to come. Gifts may also be made anonymously.

SUGGESTED PLEDGE PLANS				
DONOR LEVEL	TOTAL PLEDGE	5 ANNUAL PAYMENTS	20 QUARTERLY PAYMENTS	60 MONTHLY PAYMENTS
Raphael	\$750,000	\$150,000	\$37,500	\$12,500
	\$500,000	\$100,000	\$25,000	\$8,333
Seraphim	\$250,000	\$50,000	\$12,000	\$4,167
	\$100,000	\$20,000	\$5,000	\$1,667
Cherubim	\$75,000	\$15,000	\$3,750	\$1,250
	\$50,000	\$10,000	\$2,500	\$833
Archangel	\$40,000	\$8,000	\$2,000	\$667
	\$25,000	\$5,000	\$1,250	\$417
Guardian Angel	\$20,000	\$4,000	\$1,000	\$333
	\$15,000	\$3,000	\$750	\$250
	\$10,000	\$2,000	\$500	\$167
	\$5,000	\$1,000	\$250	\$83
Angel	\$4,000	\$800	\$200	\$67
	\$3,000	\$600	\$150	\$50
	\$2,000	\$400	\$100	\$33

Commitment Weekend December 17th-18th

Please remember that contributions made in 2011 bring us closer to being able to begin construction in 2014 (or sooner!).

Suggested Pledge Plans

A pledge is an intention of good faith that can be adjusted at the donor's discretion. All gifts of any size are gratefully accepted in the spirit they are given. Please prayerfully consider the pledge amount, duration, number of payments, and schedule that best suits your circumstances. The chart to the left provides examples of pledge plans that are payable for up to a five-year period.

- A donor may opt for a shorter or longer pledge period, or a one-time gift.
- A 10% down payment is suggested but not required to begin a pledge.
- Checks should be made payable to: *Saint Raphael Capital Campaign, Phase II.*

Please Keep
in Mind...

Tax
Advantages
of
Charitable
Giving

All contributions to the Capital Campaign "*Changing the Face of Saint Raphael Parish, from Generation to Generation, Phase II*" are tax deductible as provided under IRS guidelines

Transfer of Securities

If you contribute appreciated securities that have been held more than 12 months, no capital gains tax is due and a charitable deduction for the full market value may be realized. Please consult with your tax advisor should you have any questions. Please contact the parish office for specific instructions regarding transfers of securities.

Matching Gift Programs

You are encouraged to check with your employer to see if it offers a matching gift program. Many companies offer this type of program to their employees, and sometimes retirees, as a way to encourage charitable giving.

This type of matching gift program could be an opportunity to double or even triple the size of your pledge! Every program has guidelines, so contact the Human Resources office of your employer to find out if a program is offered and whether you qualify. Ask for the appropriate form, complete the donor portion, and then forward that form and your pledge to the parish office.

Contribution of an IRA

An extension of the charitable IRA rollover rule for 2011 allows certain individuals to rollover amounts from an individual retirement account (IRA) directly to a charity without recognizing the assets transferred as income. The donor must be 70-½ or older. A gift up to a total of \$100,000 is allowed. Please contact your tax advisor for details. Please contact the parish office for specific instructions regarding transfers of securities.

The Campaign Leadership Committee

thanks the Saint Raphael Parish Family for generously sharing your time, talent and treasure to make us a vibrant Catholic community.

Rev. Timothy W. Gareau, Pastor

Kris McGivney, Project Manager

Ed & Marilyn Maher, Honorary Campaign Chairpersons

Steve & Maureen Smith, Campaign Chairpersons

Sean & Teresa Hardy, Major Gifts Co-Chairpersons

Ed & Megan McNamara, Major Gifts Co-Chairpersons

Tom & Bev Jelepis, Major Gifts Co-Chairpersons

Don & Denise Zwilling, Advance Gifts Co-Chairpersons

Terry & Kathy Burke, Advance Gifts Co-Chairpersons

Tim & Jennifer Atkinson, Recruitment Co-Chairpersons

Dan & Colleen Leitch, Recruitment Co-Chairpersons

Evelyn Allen, Marketing/P.R. Chairperson

Jim Potter, Corporate/Foundation Chairperson

Joyce Wager, Director of Stewardship

Zarzycki-Malik Architects, Architects

Fred Roberts, Campaign Director

Changing Our World, Inc., Development Consultants



*Saint
Raphael
Parish*

525 Dover Center Road

Bay Village, OH 44140

440.871.1100

saintraphaelparish.com